

# Dual polarization Directional Antenna for 5150 - 5875 MHz

## SAA12-200090

Version 2.0

### Electrical Specification

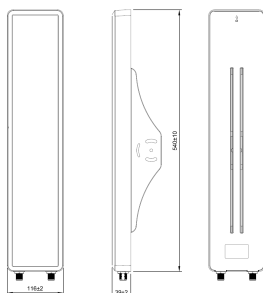
Frequency range	5150 - 5875 MHz
Gain	15.0±1 dBi
VSWR	2.0 : 1 Max.
Polarization	Linear, ±45°
Horizontal Beamwidth 3dB	60°
Horizontal Beamwidth 6dB	90°
Vertical Beamwidth 3dB	6°
Vertical Beamwidth 6dB	8°
Side Lobe Level	-6 dB Max.
Front-to-back ratio	-20dB Max.
Isolation	20 dB Min.
Input impedance	50 Ohm
Cable	N/A
Connector	N jack x 2
Power handling	6 W (cw)
Lightning protection	DC ground



### Environmental & Mechanical Characteristics

Survival wind speed	216 km/hr
Temperature	-40°C to +80°C
Humidity	95% @ 55°C
Radome color	Warm gray 1C
Radome material	ASA, UV resistant(UL94 HB)
Weight*	1.06kg
Dimensions	540 x 116 x 39 mm
Waterproof	IPX5
Mount kit	Pole mount & Wall mount

\* 1.54 kg include mounting kit



Port1

Port2

